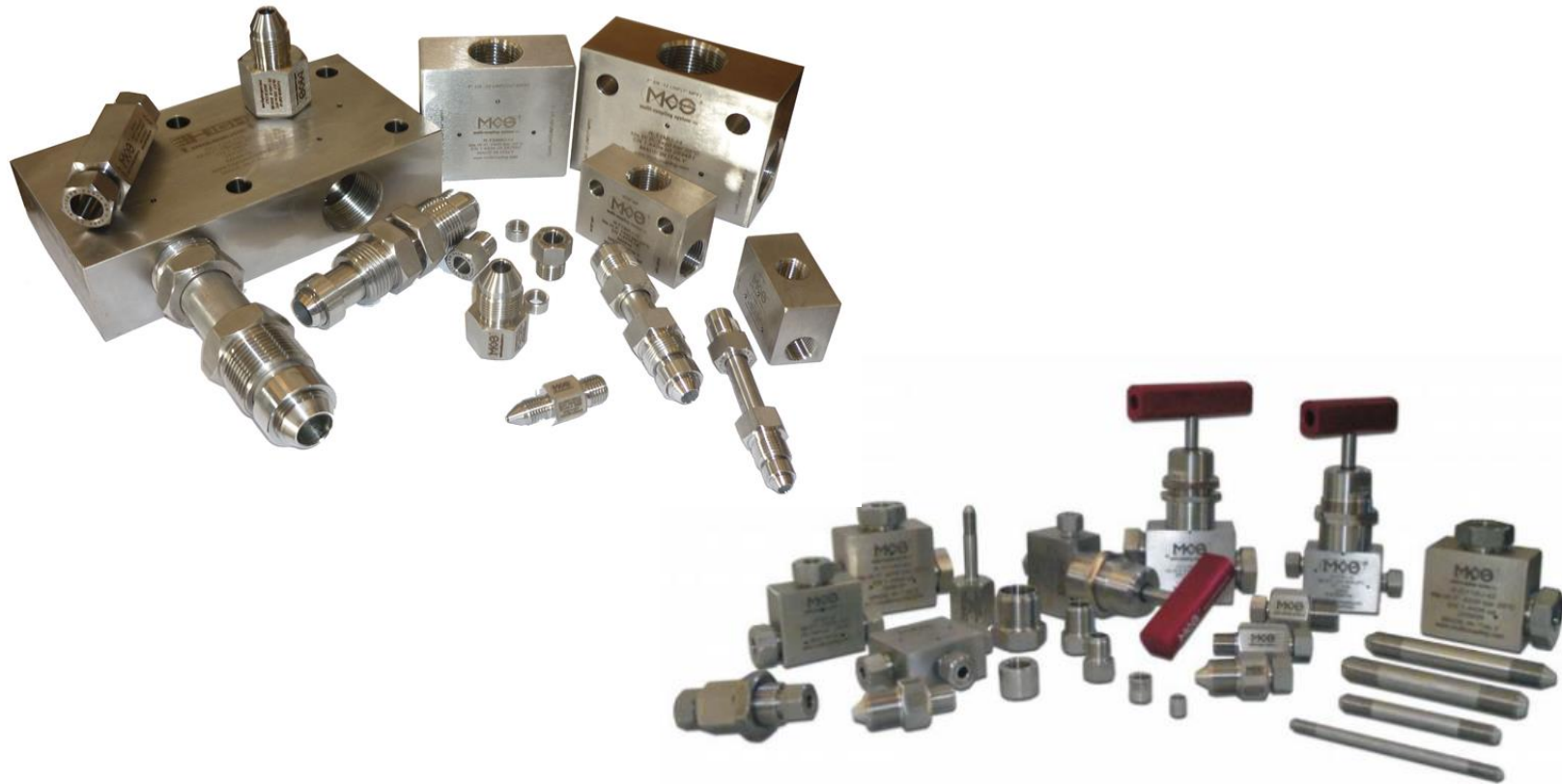




# *MULTI-COUPLING SYSTEM*

*HYDROGEN HIGH PRESSURE VALVES AND FITTINGS UP TO 1400 BAR*





**multi-coupling system** SRL

## HYDROGEN HIGH PRESSURE VALVES AND FITTINGS UP TO 1400 BAR



*MULTI-COUPLING SYSTEM S.r.l. designs and manufactures oil-hydraulic and hydrodynamic groups and plants for the most varied industrial sectors and for specific applications.*

*The company was established in Legnano (MI), but soon the development of the activity imposed a transfer of the operational headquarters to Canegrate, and later to Villa Cortese in a larger production plant.*

*Established in 1992, thanks to the experience gained in high and very high-pressure systems (5000 bar and above), Multi-Coupling System designs and supplies power and distribution units, test benches, quality control equipment, subsea applications, standard or special components and pipes on specific requests of its customers.*

*The special components are manufactured directly in-house by processing semi-finished stainless-steel products. The company has also purchased equipment allowing it to modernize its production cycles, thus obtaining a qualitative improvement of the finished product intended for large, medium and small industry, both of manufacturers and users, at national level, which require, in the production process, of a special fluidic technology.*

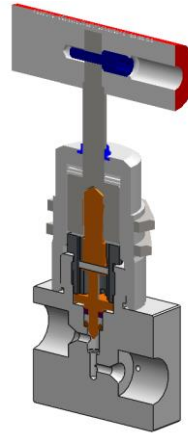
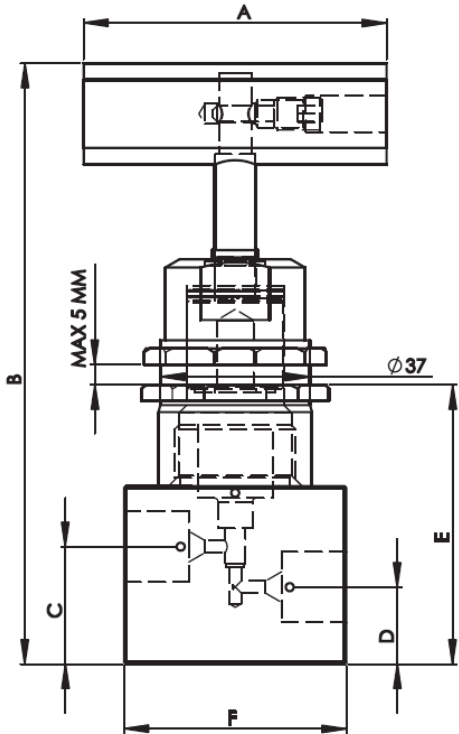
*The nature of the products manufactured and the extreme flexibility of the company, in fact, make it possible to meet the needs of all the customers who over the years have demonstrated a loyalty to the same. In 2002 Multi-coupling created the HIGH PRESSURE brand, that is a production line for high pressure components and equipment. MATERIALS*



**multi-coupling system** SRL

## HYDROGEN HIGH PRESSURE VALVES AND FITTINGS UP TO 1400 BAR

### HAND OPERATED 2 WAY IN LINE NEEDLE VALVES



*Aisi 316L standard materials*

*Special cleaning for use in hydrogen systems to avoid contamination.*

*Specific selection of metallic materials to avoid hydrogen embrittlement.*

*Special hard treatments for Valve stem*

*Leakage test on seat and packing with nitrogen at maximum operating pressure.*

*Suitable for operation in the temperature range -40°C up to +85°C*

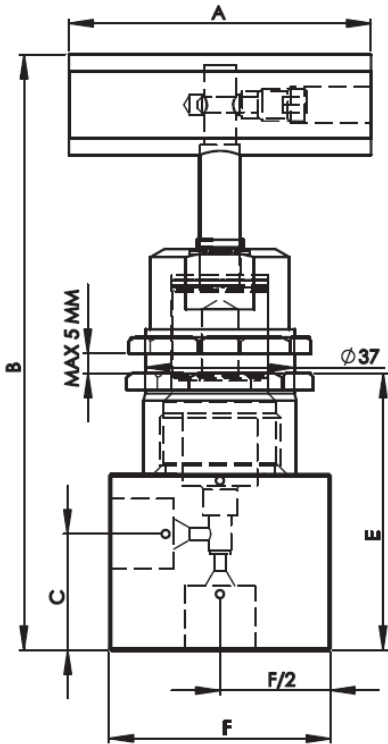
CODE	ORIFIC E	MA. W. P (bar)	CONNECTION	A (mm)	B (mm)	C (mm)	D (mm)	E (mm)	F (mm)	BLOCK THICK. (mm)
VS-14MU-L-14-H2	3	1400	2 x 7/16"-20 UNF	75	149	29	18	69	51	32
VS-38MU-L-14-H2	4,5	1400	2 x 9/16"-18 UNF	75	149	29	18	69	51	32
VS-13MU-L-14-H2	7	1400	2 x 13/16"-16 UNF	110	158	35	19	78	64	36



**multi-coupling system** SRL

## HYDROGEN HIGH PRESSURE VALVES AND FITTINGS UP TO 1400 BAR

### HAND OPERATED 2 WAY ANGLE NEEDLE VALVES



*Aisi 316L standard materials*

*Special cleaning for use in hydrogen systems to avoid contamination.*

*Specific selection of metallic materials to avoid hydrogen embrittlement.*

*Special hard treatments for Valve stem*

*Leakage test on seat and packing with nitrogen at maximum operating pressure.*

*Suitable for operation in the temperature range -40°C up to +85°C*

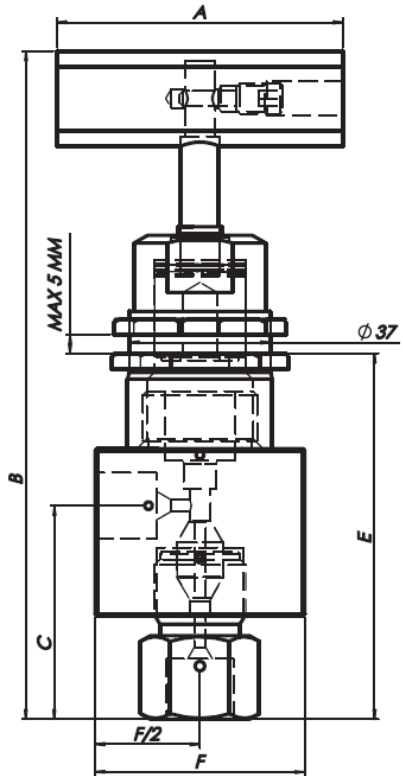
CODE	ORIFIC E	MA. W. P (bar)	CONNECTION	A (mm)	B (mm)	C (mm)	D (mm)	E (mm)	F (mm)	BLOCK THICK. (mm)
VS-14MU-A-14-H2	3	1400	2 x 7/16"-20 UNF	75	149	29	//	69	51	32
VS-38MU-A-14-H2	4,5	1400	2 x 9/16"-18 UNF	75	149	29	//	69	51	32
VS-13MU-A-14-H2	7	1400	2 x 13/16"-16 UNF	110	158	35	//	78	64	36



multi-coupling system SRL

## HYDROGEN HIGH PRESSURE VALVES AND FITTINGS UP TO 1400 BAR

### HAND OPERATED 2 WAY REPLACE SEAT NEEDLE VALVES



*Aisi 316L standard materials*

*Special cleaning for use in hydrogen systems to avoid contamination.*

*Specific selection of metallic materials to avoid hydrogen embrittlement.*

*Special hard treatments for Valve stem*

*Leakage test on seat and packing with nitrogen at maximum operating pressure.*

*Suitable for operation in the temperature range -40°C up to +85°C*

CODE	ORIFIC E	MA. W. P (bar)	CONNECTION	A (mm)	B (mm)	C (mm)	D (mm)	E (mm)	F (mm)	BLOCK THICK. (mm)
VS-14MU-ATS-14-H2	3	1400	2 x 7/16"-20 UNF	75	149	56	//	78	51	32
VS-38MU-ATS-14-H2	4,5	1400	2 x 9/16"-18 UNF	75	149	56	//	78	51	32
VS-13MU-ATS-14-H2	7	1400	2 x 13/16"-16 UNF	110	158	64,5	//	104	64	36



## HYDROGEN HIGH PRESSURE VALVES AND FITTINGS UP TO 1400 BAR

**multi-coupling system** SRL

### HYDROGEN HIGH PRESSURE FITTINGS 1400 BAR

#### **MATERIALS**

All the adapter are made of EN 1.4404 / AISI 316L stainless steel cold worked  
Glands are made of EN 1.4404 / AISI 316L stainless steel cold worked  
Gauge connector seats 1600 bar series are made of 303 stainless steel or copper.  
Other materials are available on request.  
Special cleaning for use in hydrogen systems to avoid contamination.  
Specific selection of metallic materials to avoid hydrogen embrittlement.

#### **CONNECTION TYPES**

Available size are 1/4", 3/8", 9/16", 3/4" and 1"

#### **SAFETY ADVICE**

Operation and installation of the component parts may only be performed by trained persons.

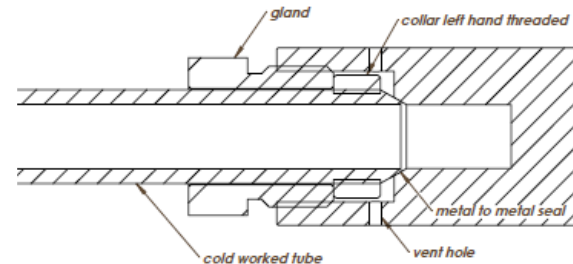
#### **USE**

MCS® Fittings may only be used for pressure-sealed conveyance of liquids and gases.  
The fittings must not be subjected to any modifications (e.g.: mechanical alterations, welding, soldering, etc.).  
Operating Temperatures from -200°C to 200°C.  
Operating Pressures up to 1400 bar (20,305 psi)

#### **ASSEMBLY**

Dissimilar angles between the body and the tube cone provide metal to metal seal along the perimeter of a contact circle. The sealing contact area is therefore, maintained at its practical minimum for the given tube size and a reliable seal is produced due to high sealing stresses that occur at low sealing loads.

Positive backup support occurs with the collar threaded (left-handed) directly onto the tubing to form a positive integral retaining surface. This allows for a consistent connection make up that is required at higher pressures and temperatures. When the gland nut is threaded into the connection, the tubing is locked securely in place and the possibility for the ejection of the tubing from a properly assembled and used connection is extremely remote



Tightening moment MP 1400

Pipe 1/4" MP 25 - 30 Nm

Pipe 3/8" MP 40 - 45 Nm (ex. 17 mm)

Pipe 9/16" MP 75 - 80 Nm (ex. 22 mm)

Pipe 3/4" MP 120 - 125 Nm (ex. 32 mm)

Pipe 1" MP 270 - 275 Nm (ex. 36 mm)



**multi-coupling system** SRL

## HYDROGEN HIGH PRESSURE VALVES AND FITTINGS UP TO 1400 BAR

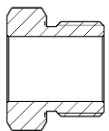
### Code generation table

R	-	A (adapter)	X	M/F	-	X	M/F	-	Y	-	H2
FITTING		G (elbow)					M=MALE		Y=	PRESSURE RATING	
MP/HP/NPT/BSP VS BSP/NPT/HP		T (tee)					F=FEMALE		07	690 bar	
		C (cross)	X=	(TUBE SIZE)					10	1000 bar	
		I (straight coupling)	118U	9/16 HP					14	1400 bar	
		M (gauge connector)	34U	3/8 HP					21	2100 bar	
		DA (gland)	916U	1/4" HP					26	2650 bar	
		P (glang plug)	1N	1" NPT					42	4200 bar	
		PP (plug)	34N	3/4"NPT							
		PA (bulkhead coupling)	12N	1/2" NPT							
		F (five port manifold)	12G	1/2" GAS							
			38N	3/8" NPT							
			38G	3/8" GAS							
			14N	1/4" NPT							
			14G	1/4" GAS							
			14M U	1/4"MP							
			38M U	3/8" MP							
			13M U	9/16" MP							
			34M U	3/4" MP							
			1MU	1" MP							



**multi-coupling system** SRL

## *HYDROGEN HIGH PRESSURE VALVES AND FITTINGS UP TO 1400 BAR*



**GLAND**



**COLLAR**

DESCRIPTION	CODE	THREAD
MEDIUM PRESSURE GLAND 1/4"	RM-DA14	7/16" - 20 UNF
MEDIUM PRESSURE GLAND 3/8"	RM-DA38	9/16" - 18 UNF
MEDIUM PRESSURE GLAND 9/16"	RM-DA13	13/16" - 16 UNF
MEDIUM PRESSURE GLAND 3/4"	RM-DA34	1" 1/8 - 12 UNF
MEDIUM PRESSURE GLAND 1"	RM-DA1	1" 3/8 - 12 UNF

DESCRIPTION	CODE	THREAD
MEDIUM PRESSURE COLLAR 1/4"	RM-OGT14	1/4" - 28 UNF LH
MEDIUM PRESSURE COLLAR 3/8"	RM-OGT38	3/8" - 20 UNF LH
MEDIUM PRESSURE COLLAR 9/16"	RM-OGT13	9/16" - 18 UNF LH
MEDIUM PRESSURE COLLAR 3/4"	RM-OGT34	3/4" - 16 UNF LH
MEDIUM PRESSURE COLLAR 1"	RM-OGT1	1" - 14 UNF LH



**PLUG**

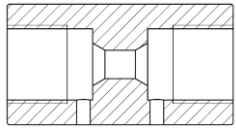
DESCRIPTION	CODE
MEDIUM PRESSURE PLUG 1/4"	RM-PP14-14
MEDIUM PRESSURE PLUG 3/8"	RM-PP38-14
MEDIUM PRESSURE PLUG 9/16"	RM-PP916-14
MEDIUM PRESSURE PLUG 3/4"	RM-PP34-14
MEDIUM PRESSURE PLUG 1"	RM-PP1-14





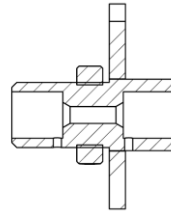
multi-coupling system SRL

## HYDROGEN HIGH PRESSURE VALVES AND FITTINGS UP TO 1400 BAR



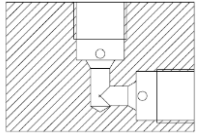
STRAIGHT UNION

DESCRIPTION	CODE	MA.W.P (bar)	ORIFICE
2 X 1/4" MP FEMALE	R-I14MU-14-H2	1400	3 mm
2 X 3/8" MP FEMALE	R-I38MU-14-H2	1400	5.2 mm
2 X 9/16" MP FEMALE	R-I13MU-14-H2	1400	8 mm
2 X 3/4" MP FEMALE	R-I34MU-14-H2	1400	11.5 mm
2 X 1" MP FEMALE	R-I1MU-14-H2	1400	14.3 mm
2 X 3/4" MP FEMALE	R-I34MU-10-H2	1050	13 mm
2 X 1" MP FEMALE	R-I1MU-07-H2	700	17.5 mm



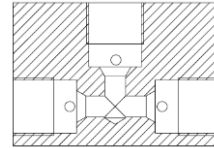
BULKHEAD

DESCRIPTION	CODE	MA.W.P (bar)	ORIFICE
2 X 1/4" MP FEMALE	R-PA14MU-14-H2	1400	3 mm
2 X 3/8" MP FEMALE	R-PA38MU-14-H2	1400	5.2 mm
2 X 9/16" MP FEMALE	R-PA13MU-14-H2	1400	8 mm
2 X 3/4" MP FEMALE	R-PA34MU-14-H2	1400	11.5 mm
2 X 1" MP FEMALE	R-PA1MU-14-H2	1400	14.3 mm
2 X 3/4" MP FEMALE	R-PA34MU-10-H2	1050	13 mm
2 X 1" MP FEMALE	R-PA1MU-07-H2	700	17.5 mm



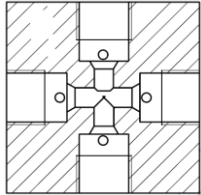
**ELBOW**

DESCRIPTION	CODE	MA.W.P (bar)	ORIFICE
2 X 1/4" MP FEMALE	R-G14MU-14-H2	1400	3 mm
2 X 3/8" MP FEMALE	R-G38MU-14-H2	1400	5.2 mm
2 X 9/16" MP FEMALE	R-G13MU-14-H2	1400	8 mm
2 X 3/4" MP FEMALE	R-G34MU-14-H2	1400	11.5 mm
2 X 1" MP FEMALE	R-G1MU-14-H2	1400	14.3 mm
2 X 3/4" MP FEMALE	R-G34MU-10-H2	1050	13 mm
2 X 1" MP FEMALE	R-G1MU-07-H2	700	17.5 mm



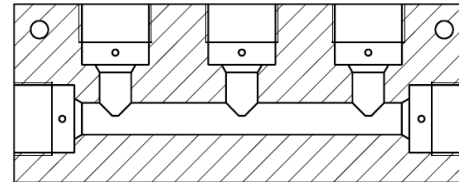
**TEE**

DESCRIPTION	CODE	MA.W.P (bar)	ORIFICE
3 X 1/4" MP FEMALE	R-T14MU-14-H2	1400	3 mm
3 X 3/8" MP FEMALE	R-T38MU-14-H2	1400	5.2 mm
3 X 9/16" MP FEMALE	R-T13MU-14-H2	1400	8 mm
3 X 3/4" MP FEMALE	R-T34MU-14-H2	1400	11.5 mm
3 X 1" MP FEMALE	R-T1MU-14-H2	1400	14.3 mm
3 X 3/4" MP FEMALE	R-T34MU-10-H2	1050	13 mm
3 X 1" MP FEMALE	R-T1MU-07-H2	700	17.5 mm



**CROSS**

DESCRIPTION	CODE	MA.W.P (bar)	ORIFICE
4 X 1/4" MP FEMALE	R-C14MU-14-H2	1400	3 mm
4 X 3/8" MP FEMALE	R-C38MU-14-H2	1400	5.2 mm
4 X 9/16" MP FEMALE	R-C13MU-14-H2	1400	8 mm
4 X 1" MP FEMALE	R-C1MU-14-H2	1400	14.3 mm



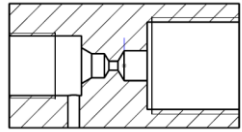
**5 PORT MANIFOLD**

DESCRIPTION	CODE	MA.W.P (bar)	ORIFICE
5 X 3/8" MP FEMALE	R-F38MU-14-H2	1400	5.2 mm
5 X 9/16" MP FEMALE	R-F13MU-14-H2	1400	8 mm
5 X 3/4" MP FEMALE	R-F34MU-14-H2	1400	11.5 mm

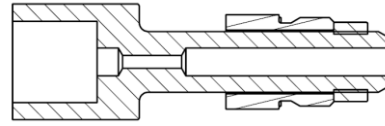


**multi-coupling system** SRL

## HYDROGEN HIGH PRESSURE VALVES AND FITTINGS UP TO 1400 BAR



**GAUGE CONNECTOR**



**SWIVEL GAUGE CONNECTOR**

DESCRIPTION	CODE	MA.W.P (bar)	ORIFICE
1/4" MP FEMALE X 1/2" GAS	R-M14MU-12G-14-H2	1400	3 mm
3/8" MP FEMALE X 1/2" GAS	R-M38MU-12G-14-H2	1400	5.2 mm
9/16" MP FEMALE X 1/2" GAS	R-M13MU-12G-14-H2	1400	6.5 mm
1/4" MP FEMALE X 1/4" GAS	R-M14MU-14G-14-H2	1400	3 mm
3/8" MP FEMALE X 1/4" GAS	R-M38MU-14G-14-H2	1400	5.2 mm

DESCRIPTION	CODE	MA.W.P (bar)	ORIFICE
3/8" MP MALE SWIVEL X 1/2" GAS	R-M38MUG-12G-14-H2	1400	5.2 mm
9/16" MP MALE SWIVEL X 1/2" GAS	R-M13MUG-12G-14-H2	1400	6 mm
3/4" MP MALE SWIVEL X 1/2" GAS	R-M34MUG-12G-14-H2	1400	6 mm
3/8" MP MALE SWIVEL X 1/4" GAS	R-M38MUG-14G-14-H2	1400	5.2 mm



**multi-coupling system** SRL

**HYDROGEN HIGH PRESSURE VALVES AND FITTINGS UP TO 1400 BAR**

## MEDIUM PRESSURE TUBE

DESCRIPTION	CODE	MA.W.P (bar)	I.D.X O.D.
1/4" MP TUBE	TRM-14-14	1400	3 mm X 6,35 mm
3/8" MP TUBE	TRM-38-14	1400	5.2 mm x 9,52
9/16" MP TUBE	TR-916-15	1500	7,8 mm X 14,28 mm
3/4" MP TUBE	TRM-34-10	1000	13 mm X 19,05
	TRM-34-14	1400	11 mm X 19,05
1" MP TUBE	TRM-1-08	800	17,5 mm X 25,4
	TRM-1-14	1400	14,3 mm X 25,4



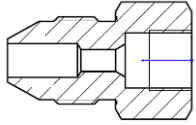
### **MATERIALS**

All the tube are made of EN 1.4404 /AISI 316L stainless steel cold worked  
To maintain material specification integrity it is recommended that the bending radius is at least 6 times the outer diameter of the tube  
Coning and threading service for length up to 6 meter for 1/4 - 3/8 - 9/16 tube .For 3/4" - 1" tube length up to 2,5 meters



**multi-coupling system** SRL

*HYDROGEN HIGH PRESSURE VALVES AND FITTINGS UP TO 1400 BAR*



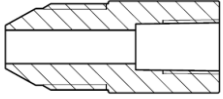
## MEDIUM PRESSURE MALE - MEDIUM PRESSURE FEMALE

DESCRIPTION	CODE	MA.W.P (bar)	ORIFICE
1/4" MP MALE X 3/8" MP FEMALE	R-A14MUM-38MUF-14-H2	1400 bar	3 mm
1/4" MP MALE X 9/16" MP FEMALE	R-A14MUM-13MUF-14-H2	1400 bar	3 mm
3/8" MP MALE X 1/4" MP FEMALE	R-A38MUM-14MUF-14-H2	1400 bar	3 mm
3/8" MP MALE X 9/16" MP FEMALE	R-A38MUM-13MUF-14-H2	1400 bar	5.2 mm
9/16" MP MALE X 1/4" MP FEMALE	R-A13MUM-14MUF-14-H2	1400 bar	3 mm
9/16" MP MALE X 3/8" MP FEMALE	R-A13MUM-38MUF-14-H2	1400 bar	5.2 mm
9/16" MP MALE X 3/4" MP FEMALE	R-A13MUM-34MUF-14-H2	1400 bar	8 mm
9/16" MP MALE X 1" MP FEMALE	R-A13MUM-14MUF-14-H2	1400 bar	8 mm
3/4" MP MALE X 1/4" MP FEMALE	R-A34MUM-14MUF-14-H2	1400 bar	3 mm
3/4" MP MALE X 3/8" MP FEMALE	R-A34MUM-38MUF-14-H2	1400 bar	5.2 mm
3/4" MP MALE X 9/16" MP FEMALE	R-A34MUM-13MUF-14-H2	1400 bar	8 mm
3/4" MP MALE X 1" MP FEMALE	R-A34MUM-1MUF-14-H2	1400 bar	11.5 mm
1" MP MALE X 1/4" MP FEMALE	R-A1MUM-14MUF-14-H2	1400 bar	3 mm
1" MP MALE X 3/8" MP FEMALE	R-A1MUM-38MUF-14-H2	1400 bar	5.2 mm
1" MP MALE X 9/16" MP FEMALE	R-A1MUM-13MUF-14-H2	1400 bar	8 mm
1" MP MALE X 3/4" MP FEMALE	R-A1MUM-34MUF-14-H2	1400 bar	11.5 mm



multi-coupling system SRL

## *HYDROGEN HIGH PRESSURE VALVES AND FITTINGS UP TO 1400 BAR*



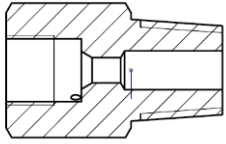
### MEDIUM PRESSURE MALE - NPT FEMALE (N) / GAS (G)

DESCRIPTION	CODE	MA.W.P (bar)	ORIFICE
1/4" MP MALE X 1/4" NPT FEMALE	R-A14MUM-14NF-10	1035 bar	3 mm
1/4" MP MALE X 3/8" NPT FEMALE	R-A14MUM-38NF-10	1035 bar	3 mm
1/4" MP MALE X 1/2" NPT FEMALE	R-A14MUM-12NF-10	1035 bar	3 mm
3/8" MP MALE X 1/4" NPT FEMALE	R-A38MUM-14NF-10	1035 bar	5.2 mm
3/8" MP MALE X 3/8" NPT FEMALE	R-A38MUM-38NF-10	1035 bar	5.2 mm
3/8" MP MALE X 1/2" NPT FEMALE	R-A38MUM-12NF-10	1035 bar	5.2 mm
9/16" MP MALE X 1/4" NPT FEMALE	R-A13MUM-14NF-10	1035 bar	8 mm
9/16" MP MALE X 3/8" NPT FEMALE	R-A13MUM-38NF-10	1035 bar	8 mm
9/16" MP MALE X 1/2" NPT FEMALE	R-A13MUM-12NF-10	1035 bar	8 mm
3/4" MP MALE X 1/4" NPT FEMALE	R-A34MUM-14NF-10	1035 bar	11 mm
3/4" MP MALE X 3/8" NPT FEMALE	R-A34MUM-38NF-10	1035 bar	13 mm
3/4" MP MALE X 1/2" NPT FEMALE	R-A34MUM-12NF-10	1035 bar	13 mm
3/4" MP MALE X 3/4" NPT FEMALE	R-A34MUM-34NF-07	690 bar	13 mm
1" MP MALE X 1/4" NPT FEMALE	R-A1MUM-14NF-10	1035 bar	11 mm
1" MP MALE X 3/8" NPT FEMALE	R-A1MUM-38NF-10	1035 bar	15 mm
1" MP MALE X 1/2" NPT FEMALE	R-A1MUM-12NF-10	1035 bar	17.5 mm
1" MP MALE X 3/4" NPT FEMALE	R-A1MUM-34NF-07	690 bar	17.5 mm
1" MP MALE X 1" NPT FEMALE	R-A1MUM-1NF-07	690 bar	17.5 mm



multi-coupling system SRL

## HYDROGEN HIGH PRESSURE VALVES AND FITTINGS UP TO 1400 BAR



### MEDIUM PRESSURE FEMALE - NPT MALE(N) /GAS(G)

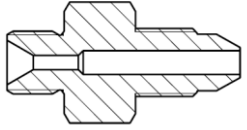
DESCRIPTION	CODE	MA.W.P (bar)	ORIFICE
1/4" MP FEMALE X 1/4" NPT MALE	R-A14MUF-14NM-10-H2	1035 bar	3 mm
1/4" MP FEMALE X 3/8" NPT MALE	R-A14MUF-38NM-10-H2	1035 bar	3 mm
1/4" MP FEMALE X 1/2" NPT MALE	R-A14MUF-12NM-10-H2	1035 bar	3 mm
3/8" MP FEMALE X 1/4" NPT MALE	R-A38MUF-14NM-10-H2	1035 bar	5 mm
3/8" MP FEMALE X 3/8" NPT MALE	R-A38MUF-38NM-10-H2	1035 bar	5.2 mm
3/8" MP FEMALE X 1/2" NPT MALE	R-A38MUF-12NM-10-H2	1035 bar	5.2 mm
9/16" MP FEMALE X 1/4" NPT MALE	R-A13MUF-14NM-10-H2	1035 bar	5 mm
9/16" MP FEMALE X 3/8" NPT MALE	R-A13MUF-38NM-10-H2	1035 bar	6 mm
9/16" MP FEMALE X 1/2" NPT MALE	R-A13MUF-12NM-10-H2	1035 bar	8 mm
3/4" MP FEMALE X 1/4" NPT MALE	R-A34MUF-14NM-10-H2	1035 bar	5 mm
3/4" MP FEMALE X 3/8" NPT MALE	R-A34MUF-38NM-10-H2	1035 bar	6 mm
3/4" MP FEMALE X 1/2" NPT MALE	R-A34MUF-12NM-10-H2	1035 bar	8 mm
3/4" MP FEMALE X 3/4" NPT MALE	R-A34MUF-34NM-07-H2	690 bar	13 mm
1" MP FEMALE X 1/4" NPT MALE	R-A1MUF-14NM-10-H2	1035 bar	5 mm
1" MP FEMALE X 3/8" NPT MALE	R-A1MUF-38NM-10-H2	1035 bar	6 mm
1" MP FEMALE X 1/2" NPT MALE	R-A1MUF-12NM-10-H2	1035 bar	8 mm
1" MP FEMALE X 3/4" NPT MALE	R-A1MUF-34NM-07-H2	690 bar	13 mm
1" MP FEMALE X 1" NPT MALE	R-A1MUF-1NM-07-H2	690 bar	17.5 mm





**multi-coupling system** SRL

## *HYDROGEN HIGH PRESSURE VALVES AND FITTINGS UP TO 1400 BAR*



### **MEDIUM PRESSURE MALE - GAS MALE FLARED(GMS)**

DESCRIPTION	CODE	MA.W.P (bar)	ORIFICE
1/4" MP FEMALE X 1/4" BSP MALE	R-A14MUM-14GMS-10-H2	1000 bar*	3 mm
1/4" MP FEMALE X 3/8" BSP MALE	R-A14MUM-38GMS-10-H2	1000 bar*	3.2 mm
3/8" MP FEMALE X 1/4" BSP MALE	R-A38MUM-14GMS-10-H2	1000 bar*	3 mm
3/8" MP FEMALE X 3/8" BSP MALE	R-A38MUM-38GMS-10-H2	1000 bar*	5.2 mm
3/8" MP FEMALE X 1/2" BSP MALE	R-A38MUM-12GMS-07-H2	700 bar*	5.2 mm
9/16" MP FEMALE X 1/4" BSP MALE	R-A13MUM-14GMS-10-H2	1000 bar*	3 mm
9/16" MP FEMALE X 3/8" BSP MALE	R-A13MUM-38GMS-10-H2	1000 bar*	6 mm
9/16" MP FEMALE X 1/2" BSP MALE	R-A13MUM-12GMS-07-H2	700 bar*	8 mm
3/4" MP FEMALE X 1/2" BSP MALE	R-A34MUF-12GMS-07-H2	700 bar*	8 mm
1" MP FEMALE X 1/2" BSP MALE	R-A1MUF-12GMS-07-H2	700 bar*	8 mm

\*Ma.W.P with hose 60° connection 1400 bar - 1000 or 700 bar with high resistant bondeed



**multi-coupling system** SRL

## *HYDROGEN HIGH PRESSURE VALVES AND FITTINGS UP TO 1400 BAR*

### **INTERNAL EQUIPMENT**

- 3 CNC lathe 4 axes
- 2 CNC machine center 4 Axis
- 1 CNC lathe 3 axes
- 1 CNC mill 3 Axes
- 2 Automatic Warehouse
- Laser labelling machine
- Ultrasonic cleaning
- Vacuum packaging
- Impulse testing up to 4000 bar
- Hydrostatic testing up to 7000 bar
- Nitrogen testing up to 1500 bar



### **STOCK**

We have in stock a wide range of standard fitting and adapter types; do not hesitate to contact us if you need fittings and adapters of a different design. Thank to our new generation CNC working machine we will be able to satisfy any request in a very short time



All technical and dimensional information subject to change

All general terms and conditions of sale, including limitations of our liability, apply to all products and services sold.